



**NOYA**  
BRITISH SCHOOL



**المجرودي**  
**Magrudy's**  
From Our Family To Yours

Dear Valued Parents,

Greetings!

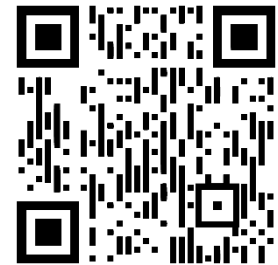
We hope this message finds you well as we embark on a bustling Back to School season.

For many years, Magrudy's has proudly served as your go-to destination for all your back-to-school essentials, offering everything from stationery to study aids and school uniforms. In our ongoing commitment to enhancing your uniform shopping journey, we've curated a uniform brochure designed with your convenience in mind.

To make your shopping experience as smooth as possible, you can explore our dedicated uniform section at Magrudy's Forsan Central Mall starting on August 1, 2024. Alternatively, if you prefer the convenience of having your uniforms reserved and delivered right to your doorstep from August 1, 2024 onward, we are thrilled to offer online ordering through the QR code provided. For any inquiries, simply reach out to us at 043-444-193.

Thank you for entrusting us with your back-to-school needs. We look forward to serving you and your family once again.

Bringing you only the best.  
**The Magrudy's Family.**



Click/Scan  
To Order

Magrudy's Forsan Central Mall Branch (10am-10pm): [View Shop Location](#)

Magrudy Enterprises L.L.C.

Tel : +971 4 297 4321, Email : [info@magrudy.com](mailto:info@magrudy.com), P. O. Box 1155, Dubai, UAE.

Follow us on: [f](#) [t](#) [i](#) /magrudys | [www.magrudy.com](http://www.magrudy.com)





المجرودي  
Magrudy's  
Bringing you only the best



**NOYA**  
BRITISH SCHOOL

**Noya British School**





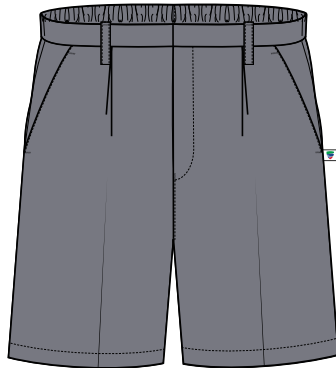
Polo T-Shirt  
Boys | FS1 - FS2  
Compulsory  
AED 111-130



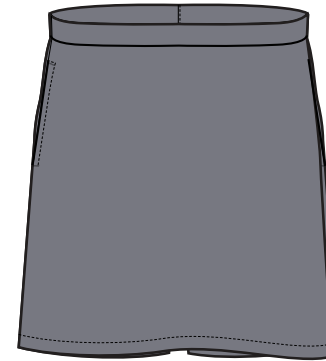
Dress  
Girls | FS1 - FS2  
Compulsory  
AED 149



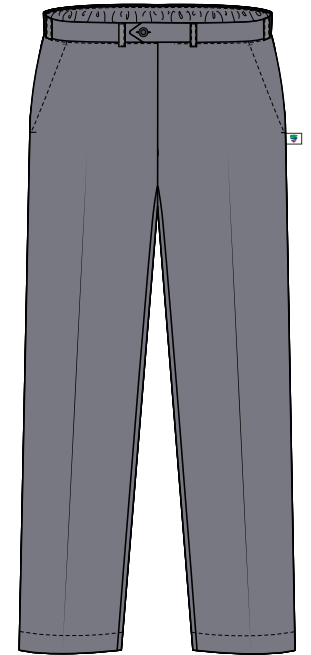
Polo T-Shirt  
Girls | FS1 - FS2  
Optional  
AED 111-130



Grey Short  
Boys | FS1 - FS2  
Compulsory  
AED 107-123



Grey Skort  
Girls | FS1 - FS2  
Optional  
AED 135



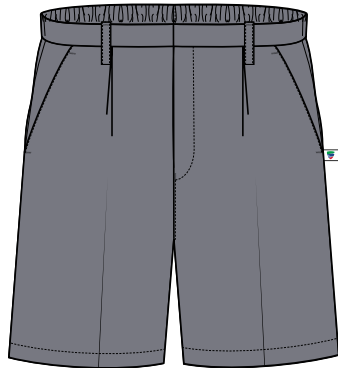
Trouser  
Boys & Girls | FS1 - FS2  
Optional  
AED 121-138



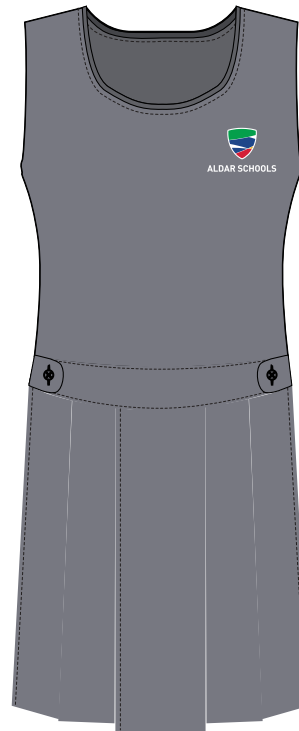
Polo T-Shirt  
Boys | Year 1 - Year 6  
Compulsory  
AED 111-130



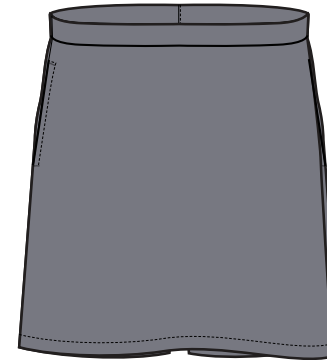
Polo T-Shirt  
Girls | Year 1 - Year 6  
Optional  
AED 111-130



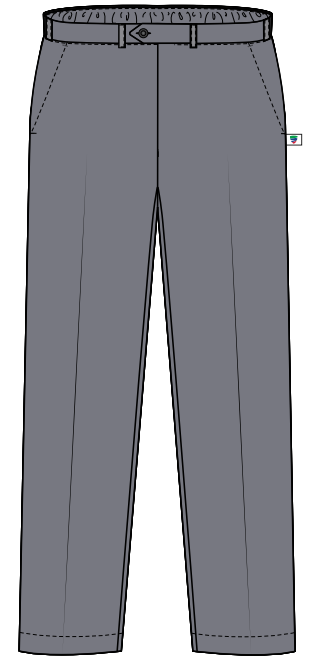
Grey Short  
Boys | Year 1 - Year 6  
Compulsory  
AED 107-123



Grey Pinafore  
Girls | Year 1 - Year 6  
Compulsory  
AED 141



Grey Skort  
Girls | Year 1 - Year 6  
Optional  
AED 135



Trouser  
Boys & Girls | Year 1 - Year 6  
Optional  
AED 121-138

## P.E. UNIFORMS



P.E. T-Shirt  
Boys & Girls | FS1 - Year 6  
Compulsory  
AED 107-135



P.E. Track Pants  
Boys & Girls | FS1 - Year 6  
Optional  
AED 141



Unisex PE Shorts  
Boys & Girls | FS1 - Year 6  
Compulsory  
AED 107-130



V-Neck Sweater  
Boys & Girls | FS1 - Year 6  
Optional  
AED 146-169



Navy Blue Cardigan  
Boys & Girls | FS1 - Year 6  
Optional  
AED 146-169

## HOUSE SHIRTS



House Shirts  
Boys & Girls | FS1 - Year 6  
AED 95-107

## SWIM WEAR



Swimsuit  
AED 112



Romper  
AED 205

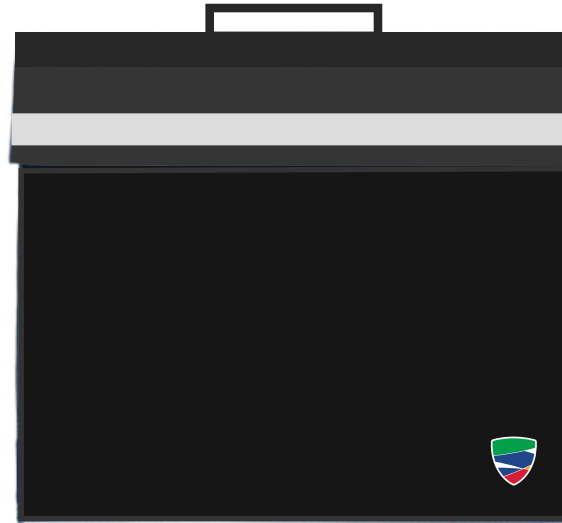


Swim Cap  
AED 60



Swimming Trunks  
AED 100





Book Bag  
AED 66



P.E. / Swim Bag  
AED 54



Legionaire Cap  
AED 66



Baseball Cap  
AED 66

## How to shop online

### STEP 1

Visit [www.magrudy.com/category/uniforms](http://www.magrudy.com/category/uniforms)

### STEP 2

Select the school that you wish to purchase uniform from.

### STEP 3

Add items you wish to purchase to your basket and go to your shopping cart to review and checkout.

### STEP 4

Upon checking out you will be asked to sign in or register. Fill in your details and select whether you would like to have the items delivered to your home address or collect them from a Magrudy's store of your choice.

### STEP 5

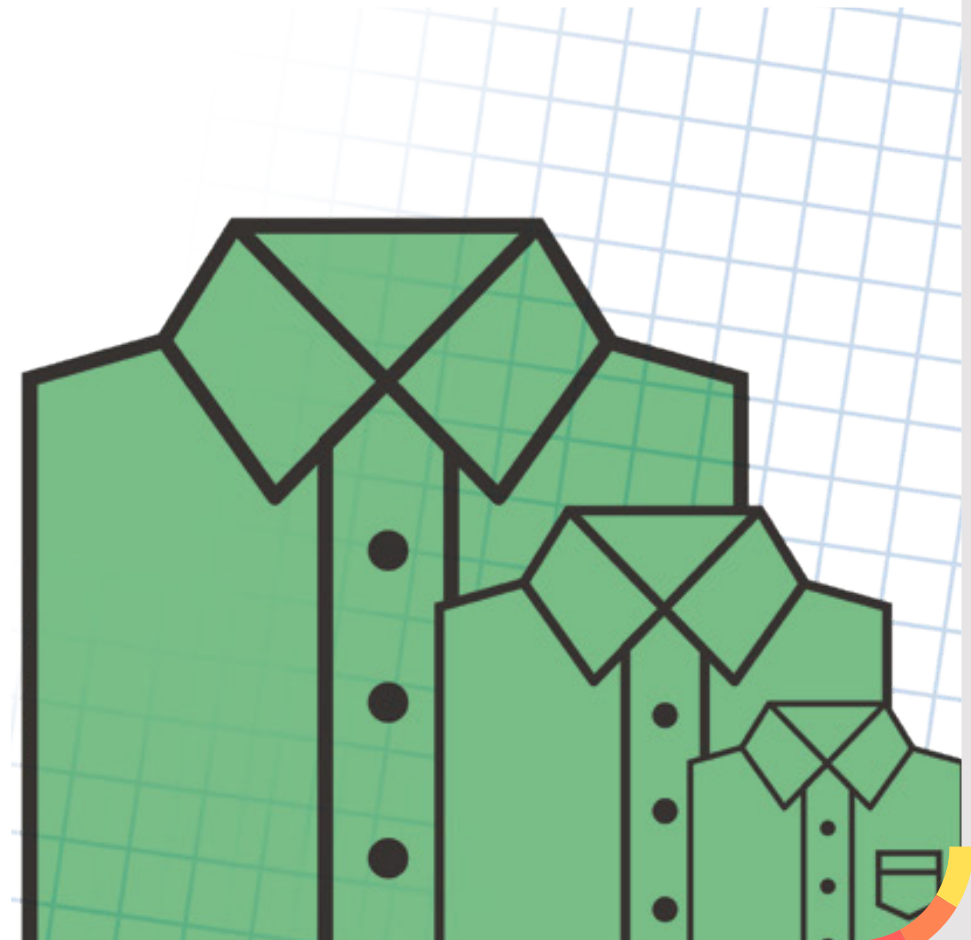
Pay for your order.

### STEP 6

Your order confirmation number will be sent via email. A separate email will be sent once your order has been shipped or is ready for collection. Visit [www.magrudy.com/ourstore/](http://www.magrudy.com/ourstore/) To see the locations and timings of all our branches if you have selected to collect your order from one of our stores.

## Alterations & Special Orders

Magrudy's offers alterations on school uniforms and also offers a special order service for when a student requires a special size.



### House Shirts

| Age/Size | Length |      | Chest (Half) |      |
|----------|--------|------|--------------|------|
|          | cm     | in   | cm           | in   |
| 2-3      | 114.3  | 45   | 81.3         | 32   |
| 3-4      | 121.9  | 48.0 | 86.4         | 34.0 |
| 5-6      | 129.5  | 51.0 | 91.4         | 36.0 |
| 7-8      | 137.2  | 54.0 | 96.5         | 38.0 |
| 9-10     | 144.8  | 57.0 | 101.6        | 40.0 |
| 11-12    | 151.1  | 59.5 | 105.4        | 41.5 |
| 13-14    | 158.8  | 62.5 | 111.8        | 44.0 |
| S        | 167.6  | 66.0 | 116.8        | 46.0 |
| M        | 175.3  | 69.0 | 121.9        | 48.0 |
| L        | 180.3  | 71.0 | 127.0        | 50.0 |
| XL       | 188.0  | 74.0 | 132.1        | 52.0 |
| XXL      | 196.9  | 77.5 | 139.7        | 55.0 |

### P.E. T-Shirt

| Age/Size | Length |      | Chest (Half) |      |
|----------|--------|------|--------------|------|
|          | cm     | in   | cm           | in   |
| 2-3      | 114.3  | 45   | 81.3         | 32   |
| 3-4      | 121.9  | 48.0 | 86.4         | 34.0 |
| 5-6      | 129.5  | 51.0 | 91.4         | 36.0 |
| 7-8      | 137.2  | 54.0 | 96.5         | 38.0 |
| 9-10     | 144.8  | 57.0 | 101.6        | 40.0 |
| 11-12    | 151.1  | 59.5 | 105.4        | 41.5 |
| 13-14    | 158.8  | 62.5 | 111.8        | 44.0 |
| S        | 167.6  | 66.0 | 116.8        | 46.0 |
| M        | 175.3  | 69.0 | 121.9        | 48.0 |
| L        | 180.3  | 71.0 | 127.0        | 50.0 |
| XL       | 188.0  | 74.0 | 132.1        | 52.0 |
| XXL      | 196.9  | 77.5 | 139.7        | 55.0 |

### Polo Shirt

| Age/Size | Length |      | Chest (Half) |      |
|----------|--------|------|--------------|------|
|          | cm     | in   | cm           | in   |
| 2-3      | 46     | 18.1 | 31           | 12.2 |
| 3-4      | 49.5   | 19.5 | 33.0         | 13.0 |
| 5-6      | 51.5   | 20.3 | 36.0         | 14.2 |
| 7-8      | 54.0   | 21.3 | 38.0         | 15.0 |
| 9-10     | 57.0   | 22.4 | 40.0         | 15.7 |
| 11-12    | 59.5   | 23.4 | 42.0         | 16.5 |
| 13-14    | 62.0   | 24.4 | 44.0         | 17.3 |
| XS       | 63.0   | 24.8 | 45.0         | 17.7 |
| S        | 64.0   | 25.2 | 46.0         | 18.1 |
| M        | 67.0   | 26.4 | 49.0         | 19.3 |
| L        | 70.0   | 27.6 | 51.0         | 20.1 |
| XL       | 73.0   | 28.7 | 54.0         | 21.3 |

### Pinafore

| Age/Size | Length |      | Chest |       | Waist |      |
|----------|--------|------|-------|-------|-------|------|
|          | cm     | in   | cm    | in    | cm    | in   |
| 4/5      | 67.3   | 26.5 | 66.0  | 26.0  | 63.5  | 25.0 |
| 5/6      | 73.7   | 29.0 | 71.1  | 28.0  | 68.6  | 27.0 |
| 6/7      | 79.4   | 31.3 | 78.7  | 31.0  | 76.2  | 30.0 |
| 7/8      | 85.1   | 33.5 | 83.8  | 33.0  | 81.3  | 32.0 |
| 8/9      | 90.2   | 35.5 | 88.9  | 35.0  | 86.4  | 34.0 |
| 9/10     | 95.3   | 37.5 | 92.7  | 36.5  | 88.9  | 35.0 |
| 10/11    | 99.1   | 39.0 | 96.5  | 38.00 | 94.0  | 37.0 |
| 11/12    | 102.9  | 40.5 | 101.6 | 40.00 | 99.1  | 39.0 |

### Summer Dress

| Age/Size | Length |      | Chest |      |
|----------|--------|------|-------|------|
|          | cm     | in   | cm    | in   |
| 2-3      | 54.6   | 21.5 | 55.9  | 22.0 |
| 3-4      | 57.2   | 22.5 | 59.7  | 23.5 |
| 5-6      | 66.0   | 26.0 | 67.3  | 26.5 |
| 7-8      | 73.7   | 29.0 | 76.2  | 30.0 |



### Bermuda Short

| Age/Size | Length |       | Waist Relax  |    | Waist Extended |    | Inseam |    | Hip |    | Thiegh |    | Bottom |    |
|----------|--------|-------|--------------|----|----------------|----|--------|----|-----|----|--------|----|--------|----|
|          | cm     | in    | cm           | in | cm             | in | cm     | in | cm  | in | cm     | in | cm     | in |
| 16       | 25     | 10.00 | 0            | 0  | 0              | 0  | 0      | 0  | 0   | 0  | 0      | 0  | 0      | 0  |
| 17       | 27     | 10.50 | 0            | 0  | 0              | 0  | 0      | 0  | 0   | 0  | 0      | 0  | 0      | 0  |
| 18       | 28     | 11.00 | 0            | 0  | 0              | 0  | 0      | 0  | 0   | 0  | 0      | 0  | 0      | 0  |
| 19       | 29     | 11.50 | 0            | 0  | 0              | 0  | 0      | 0  | 0   | 0  | 0      | 0  | 0      | 0  |
| 20       | 30     | 12.00 | 0            | 0  | 0              | 0  | 0      | 0  | 0   | 0  | 0      | 0  | 0      | 0  |
|          |        |       | Half Elastic |    |                |    |        |    |     |    |        |    |        |    |
| 21       | 37     | 14.50 | 0            | 0  | 0              | 0  | 0      | 0  | 0   | 0  | 0      | 0  | 0      | 0  |
| 22       | 38     | 15.00 | 0            | 0  | 0              | 0  | 0      | 0  | 0   | 0  | 0      | 0  | 0      | 0  |
| 23       | 40     | 15.75 | 0            | 0  | 0              | 0  | 0      | 0  | 0   | 0  | 0      | 0  | 0      | 0  |
| 24       | 42     | 16.50 | 0            | 0  | 0              | 0  | 0      | 0  | 0   | 0  | 0      | 0  | 0      | 0  |
| 25       | 44     | 17.25 | 0            | 0  | 0              | 0  | 0      | 0  | 0   | 0  | 0      | 0  | 0      | 0  |
| 26       | 46     | 18.00 | 0            | 0  | 0              | 0  | 0      | 0  | 0   | 0  | 0      | 0  | 0      | 0  |

### P.E. Shorts

| Age/Size | Length              |       | Waist Relax |       |
|----------|---------------------|-------|-------------|-------|
|          | cm                  | in    | cm          | in    |
|          | No Zip Full Elastic |       |             |       |
| 18       | 29.2                | 11.50 | 76.2        | 30.00 |
| 19       | 30.5                | 12.00 | 78.7        | 31.00 |
| 20       | 31.8                | 12.50 | 81.3        | 32.00 |
|          | Half Elastic        |       |             |       |
| 21       | 36.8                | 14.50 | 76.2        | 30.00 |
| 22       | 38.1                | 15.00 | 78.7        | 31.00 |
| 23       | 40.0                | 15.75 | 81.3        | 32.00 |
| 24       | 41.9                | 16.50 | 83.8        | 33.00 |
| 25       | 43.8                | 17.25 | 88.9        | 35.00 |
| 26       | 45.7                | 18.00 | 91.4        | 36.00 |

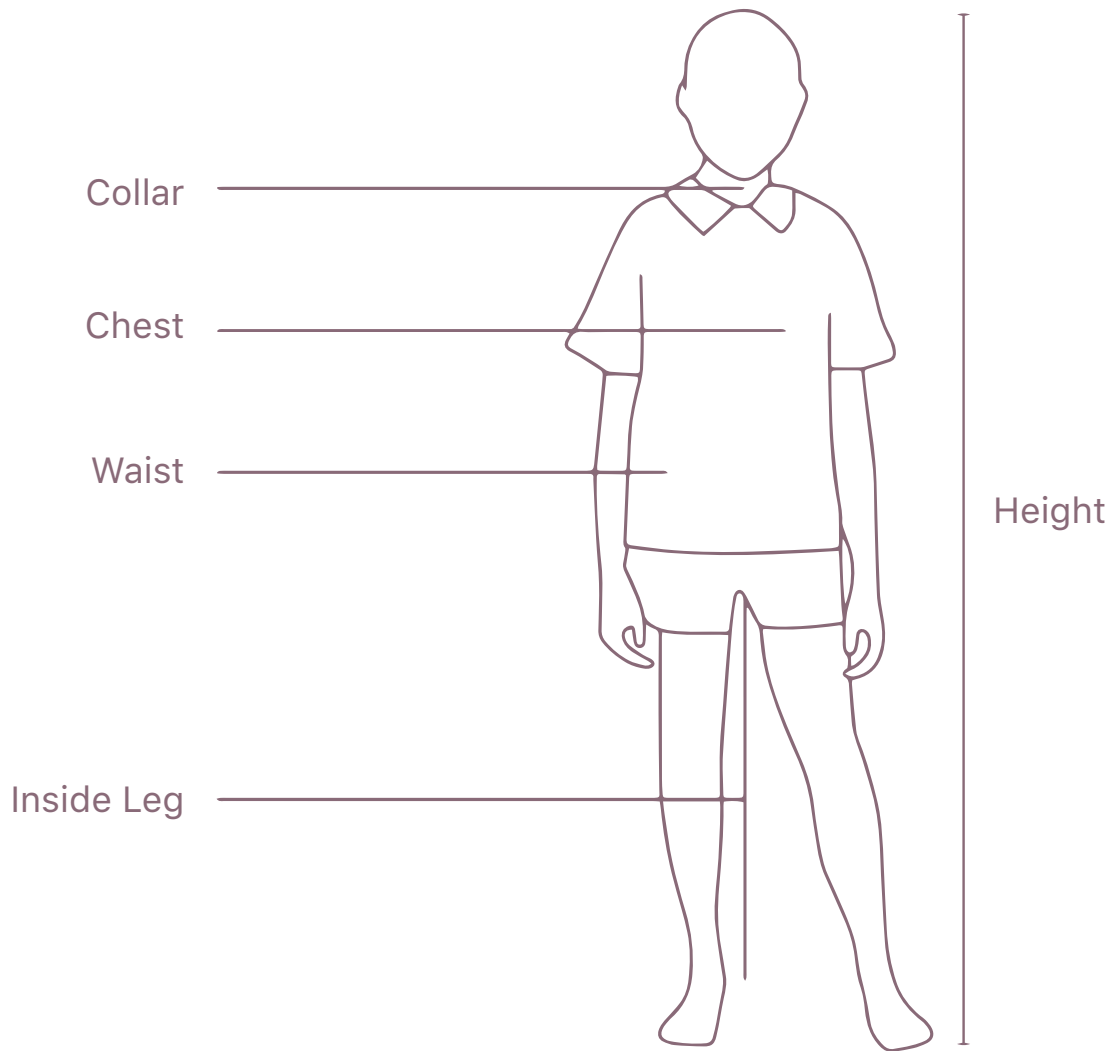
### Track Pant

| Age/Size | Length |       | Waist     |       |
|----------|--------|-------|-----------|-------|
|          | cm     | in    | cm        | in    |
| 16       | 64.8   | 25.50 | 40.6/66.0 | 16/26 |
| 18       | 69.9   | 27.50 | 45.7/71.1 | 18/28 |
| 20       | 73.7   | 29.00 | 50.8/76.2 | 20/30 |
| 22       | 80.0   | 31.50 | 55.9/81.3 | 22/32 |
| 24       | 85.1   | 33.50 | 61.0/86.4 | 24/34 |
| 26       | 89.5   | 35.25 | 66.0/91.4 | 26/36 |

### Skort

| Age/Size | Length |       | Chest |    |
|----------|--------|-------|-------|----|
|          | cm     | in    | cm    | in |
| 20       | 32     | 12.5  | 66    | 26 |
| 21       | 34     | 13.25 | 69    | 27 |
| 22       | 36     | 14    | 71    | 28 |
| 23       | 37     | 14.75 | 74    | 29 |
| 24       | 39     | 15.5  | 76    | 30 |
| 25       | 41     | 16.25 | 79    | 31 |
| 26       | 43     | 17    | 81    | 32 |





### **Height**

Measure from the top of the head down to the ground - make sure the child is barefoot with their feet together.

### **Chest**

Take the tape through the arms and around the fullest part of the chest.

### **Collar**

Place the tape measure around the base of the neck where the collar usually sits, again taking care not to pull the tape too tightly as it is important to have a little extra room around the neck.

### **Hips**

Place the tape measure around the fullest part of the bottom.

### **Inside Leg**

Measure with shoes on from the top of the inside leg to approximately 5cm above the ground.

### **Waist**

Place the tape measure around the natural waistline, taking care not to pull it too tightly.

